

MONTHLY MEMBERSHIP PROGRESS REPORT

LOCATION WISCONSIN

District 27 B2

Results as of: 4/30/2023

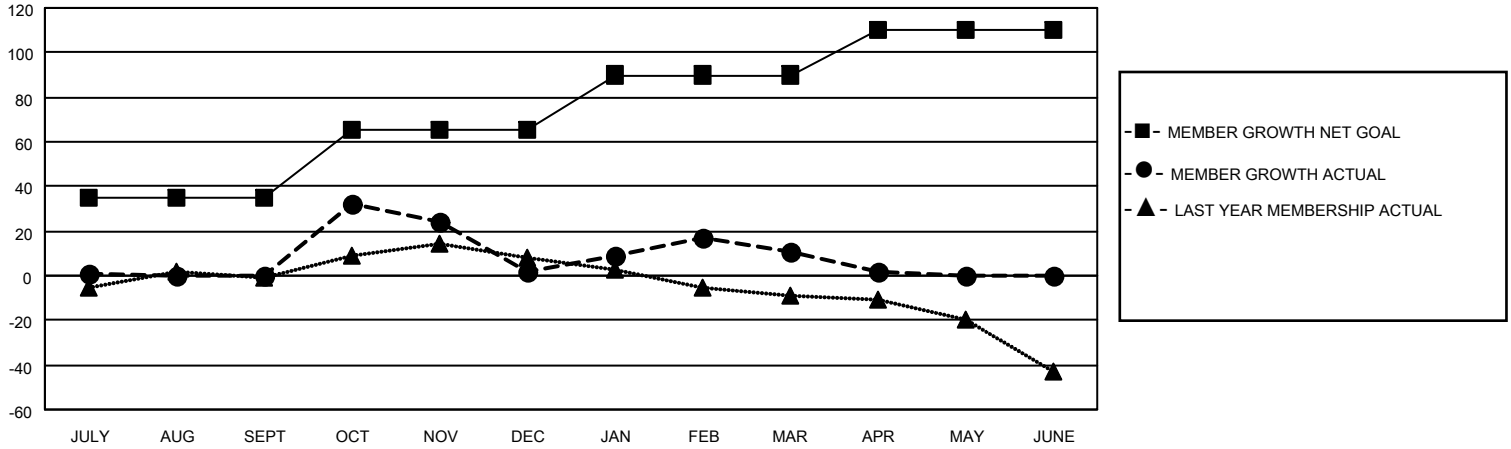
Clubs			
RESULTS FOR 2022-2023			
QUARTER	NEW CLUB GOAL	NEW CLUBS	DROPPED CLUBS
JULY/AUG/SEPT	0	0	0
OCT/NOV/DEC	0	0	0
JAN/FEB/MAR	0	0	0
APR/MAY/JUNE	0	0	0

Members			
RESULTS FOR 2022-2023			
QUARTER	MEMBER GROWTH NET GOAL	MEMBER GROWTH ACTUAL	DROPPED MEMBERS ACTUAL (including transfers)
JULY/AUG/SEPT	35	43	39
OCT/NOV/DEC	30	52	48
JAN/FEB/MAR	25	43	30
APR/MAY/JUNE	20	4	13

GOALS AND ACTUAL NEW CLUBS CUMULATIVE



GOALS AND ACTUAL MEMBERS CUMULATIVE



DROPPED CLUBS: 0

46 CLUBS OF 67 ADDED 1 OR MORE NEW MEMBERS

GENDER DISTRIBUTION

MALE	1,626 (74.97%)
FEMALE	543 (25.03%)
NON BINARY	0 (0.00%)
PREFER NOT TO ANSWER	0 (0.00%)

DROPPED MEMBERS

[CLICK HERE FOR CUMULATIVE MEMBERSHIP DATA](#)

DECEASED	25
CLUB CANCELLED	0
OTHER	105
TOTAL	130

TOTAL FAMILY UNIT MEMBERS 376

FAMILY MEMBERS PAYING HALF DUES 189